

SN0108 / SN0116 / SN0132 / SN0148

Serial Console Server

- The ALTUSEN SN series of serial console servers integrate cutting edge technologies with secure enterprise communications. Available in 8-, 16-, 32- and 48-port models, the serial console server offers both in-band and out-of-band remote serial console access to servers and network devices, via a direct Telnet/SSH client or an applet viewer. SN works in tandem with the ALTUSEN Power Over the NET™ remote power management system. Both can be managed with CC2000 management software to provide centralized data center management and integrated power management. With their comprehensive features, SN series of serial console servers help maximize IT productivity, provide scalability and reduce operational costs.

The serial console server is used to connect serial devices to the Ethernet network to meet the needs of demanding applications in industrial control, data acquisition, environment monitoring, and remote facility and equipment management. It offers versatile operation modes including Real COM Port, TCP Server/Client, UDP Server/Client, Serial Tunnel and Virtual Modem. It helps transform the capabilities of legacy serial devices to take advantage of the TCP/IP network to allow remote access, configuration, and management of the serial devices from anywhere in the world over the Internet.

SN series is a complete secure remote access and control solution. Access rights and privilege control can be applied to individual ports. Consolidated authentication simplifies password management. Data encryption is provided. Logging and alerting helps speed resolution of issues and mitigates risk. Enhanced security functions ensure the compliance of internal security mandates. The ease of use, accessibility and manageability of the SN series serial console servers enables a quick response to changing demands and helps meet ultimate business goals.



Features

System Accessibility and Availability

- Secure in-band and out-of-band network access to serial consoles
- In-band access of Ethernet
- Browser access with an intuitive GUI
- Terminal-based access with a menu-driven UI
- Out-of-band access of dial-up modem
- Modem dial-in/dial-back/dial-out*
- Front access USB ports for USB storage or for USB-based PC cards*
- Laptop USB Console (LUC) port for extra local console access via laptop computer*
- Dual Ethernet ports for failover or for dual IP addresses access*
- Dual power supply*

Serial Console Management

- Convenient and simple access via browser or Telnet/SSH client
- Port access via Telnet/SSH client and third-party client such as PuTTY
- Direct port access from Telnet client – bypassing login to SN
- Convenient port access via the applet serial viewer from SN Web GUI
- Selectable Telnet or SSH for the serial viewer
- Selectable ActiveX or Java for the serial viewer*
- Comprehensive viewer function – Copy/paste, logging, data import, Macro, broadcast and Message Board*
- Sun Solaris ready – Sun “break-safe”
- Alert String
- Command filter*
- Data buffering*
- Multiple users simultaneously access to the same port – up to 16 connections per port.
- SN0108/0116 allows only one user to have full access to one port, and the other concurrent users may view only to the same port.
- Selectable mode for multiple simultaneous access – Exclusive/ Occupy/Share mode*
- Integrated with Power Over the NET product for port and power outlet association

Security

- SSH and SSL support
- Private certificate support – SN0108 / SN0116 support private certificate importing; SN0132 / SN0148 support CA certificate
- Configurable user permissions for port access and control
- Configurable group permission for port access and control*
- Local and remote authentication and logging
- Third-party authentication – SN0108 / SN0116 support RADIUS and indirectly support AD through CC2000; SN0132 / SN0148 support RADIUS, TACACS+, LDAP/AD, and Kerberos
- IP filtering and MAC filtering*

System Management

- System configuration via Web browser of HTTP/HTTPS, Telnet/SSH client and local console
- **System log and event logging**
- **Comprehensive logging and event notification**
- ATEN Log server and Syslog server*
- SNMP agent
- Event notification – SN0108 / SN0116 support notification of SMTP email and SNMP Trap; SN0132 / SN0148 support notification of SMTP email, SNMP Trap, and SMS (with additional mobile device)
- Backup/restore system configuration*
- Firmware upgradeable
- Multi-browser support – Internet Explorer, Chrome, Firefox, Safari, Opera, Mozilla, and Netscape
- Customizable global time zone
- NTP for time server synchronization
- DHCP for dynamic IP address assignment
- IPv6 support*
- **Integrated with CC2000 for data center centralized management**

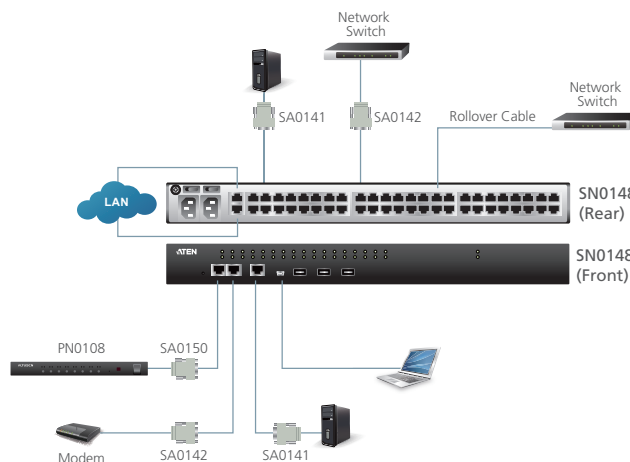
Serial Device Management

- Versatile serial operating modes – SN0108 / SN0116 support Real COM and TCP Server; SN0132 / SN0148 support Real COM, TCP Server, TCP Client, UDP, Serial Tunnel and Virtual Modem
- 128-bit/256-bit SSL encryption for Real COM, TCP Server, TCP Client, Serial Tunnel and Virtual Modem*
- Multiple simultaneous connections to the same port – up to 16 connections per port
- Real COM driver for Windows 2000/XP/Vista/7 and Windows Server 2003/2008
- Real TTY driver for Linux
- Fixed TTY driver for UNIX

Language

- Web-based GUI multi-language – available for Japanese, Korean, German, Russian, Simplified Chinese and Traditional Chinese*

* Advanced features for SN0132 / SN0148



Specification

Function		SN0108	SN0116	SN0132	SN0148
Connectors	Serial	8 x RJ-45 (F)	16 x RJ-45 (F)	32 x RJ-45 (F)	48 x RJ-45 (F)
	LAN	1 x RJ-45 (F)		2 x RJ-45 (F)	
	Power	1 x 3-prong AC Socket*		2 x 3-prong AC Socket*	
	Local Console	N/A		1 x RJ-45 (F)	
	Modem	N/A		1 x RJ-45 (F)	
	PON	N/A		1 x RJ-45 (F)	
	Laptop USB Console	N/A		1 x Mini USB	
	USB	N/A		3 x USB Type A (F)	
Switches	Power	1 x Rocker Switch		2 x Rocker Switch	
	Reset	1 x Semi-recessed Pushbutton		1 x Recessed Pushbutton	
LEDs	Serial	8 (Green)	16 (Green)	32 (Green)	48 (Green)
	Link (LAN)	1 (Green)		N/A	
	10/100 Mbps	1 (Orange/Green)		N/A	
	10/100/1000 Mbps	N/A		2 (Red/Orange/Green)	
	Power	1 (Blue)		2 (Blue)	
IP Rating		100–240VAC; 50/60Hz; 1.8A		100–240VAC; 50/60Hz; 1.8A	
Power Consumption		120V; 8W/ 230V; 8W		120V; 35W/ 230V; 37W	120V; 42W/ 230V; 45W
Environment	Operating Temp.	0 – 40°C		0 – 50°C	
	Storage Temp.	-20 – 60°C			
	Humidity	0 – 80% RH, Non-Condensing			
Physical Properties	Housing	Metal			
	Weight	3.30 kg	3.40 kg	4.84 kg	4.92 kg
	Dimensions (L x W x H)	43.72 x 21.40 x 4.40 cm		43.84 x 32.70 x 4.40 cm	

Product specifications and appearance are subject to change without notice

*Available with DC Power at customer request (SN0108D/SN0116D/SN0132D/SN0148D)

ATEN International Co., Ltd.

3F., No.125, Sec. 2, Datong Rd., Sijhih District., New Taipei City 221, Taiwan
 Phone: 886-2-8692-6789 Fax: 886-2-8692-6767
 www.aten.com E-mail: marketing@aten.com

Printed 05/2013 V1.0