

## USB KVM Extender

The CE750 is a USB based KVM Extender with automatic signal compensation and RS-232 serial functionality that allows access to a computer system from a remote USB console (USB keyboard, monitor, and USB mouse).

Because it allows access to a computer system from a remote console, the CE750 is perfect for use in any type of installation where you need to place the console where it is conveniently accessible, but you want the system equipment to reside in a safe location – away from the dust and dirt of the factory floor, or the harsh environmental influence of a construction site, for example.

The CE750 improves on previous designs by the addition of an RS-232 port, on both the Local and Remote Units, that allows you to connect to a serial terminal for configuration (Local Unit), or serial devices such as touchscreens and barcode scanners (Remote Unit)

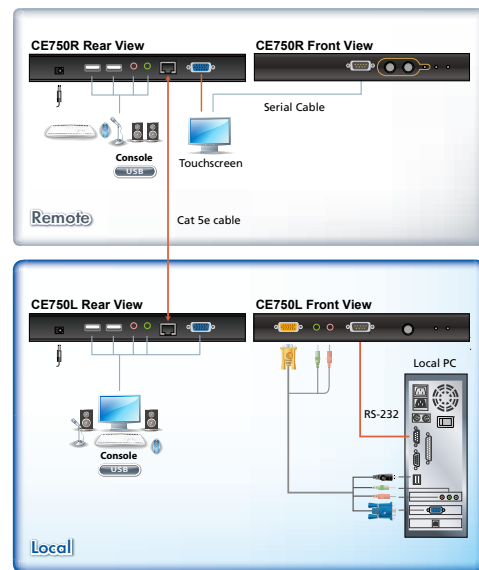
### Setup



CE750R



CE750L



### Features

- Local and Remote Units connect at distances up to 150 m using Cat 5e cable
- Dual console operation – control your system from both the local and remote USB keyboard, monitor, and mouse consoles
- Built-in ASIC for greater reliability and compatibility
- USB Keyboard and USB Mouse Ports
- RS-232 serial ports - allows you to connect to a serial terminal for configuration (Local Unit), or serial devices such as touchscreens and barcode scanners (Remote Unit)
- Supports stereo speakers and stereo microphone
- USB overcurrent detection and prevention
- Pushbutton operating mode selection (Local Unit only) – select between Local and Auto operating modes.
- Built-in 8KV/15KV ESD protection (Contact voltage 8KV; Air voltage 15KV) and 2KV surge protection
- Adjustable gain control – manually adjusts signal strength to compensate for distance
- High resolution video – up to 1920x1200@60Hz at 30m, 1600x1200@60Hz at 150m, 1280x1024@60Hz at 200m
- Supports VGA, SVGA, SXGA (1280 x 1024) and UXGA (1600 x 1200) and multisync monitors; local monitor supports DDC; DDC2; DDC2B
- Hot pluggable
- Rack mountable
- Easy to install – no software required – connecting cables to the devices is all it takes

### Specifications

Function		CE750L	CE750R
Connectors	Console Ports	Keyboard	1 x USB Type A Female (White)
		Video	1 x HDB-15 Female (Blue)
		Mouse	1 x USB Type A Female (White)
		Speakers	1 x Mini Stereo Jack Female (Green)
		Mic.	1 x Mini Stereo Jack Female (Pink)
	KVM Ports	KB / Video / Mouse	1 x SPHD-15 Female (Yellow)
		Speakers	1 x Mini Stereo Jack (Green)
		Mic.	1 x Mini Stereo Jack (Pink)
	RS-232	1 x DB-9 Female (Black)	1 x DB-9 Male (Black)
	Power	1 x DC Jack (Black)	
	Unit to Unit	1 x RJ45 Female (Black)	
LEDs	Local	1 (Green)	N/A
	Remote	1 (Green)	1 (Green)
	Link	N/A	1 (Green)
	Picture Compensation	N/A	1 (Orange)
Pushbuttons	Operating Mode Selection	1 x Pushbutton	N/A
	Picture Compensation	N/A	2 x Pushbuttons
Emulation	Keyboard / Mouse	USB	
Video		1920x1200@60Hz at 30m, 1600x1200@60Hz at 150m, 1280x1024@60Hz at 200m	
Power Consumption		DC5.3V/3.0W	DC5.3V/4.2W
Environment	Operating Temp.	0–50°C	
	Storage Temp	–20–60°C	
	Humidity	0–80% RH, Non-condensing	
Physical Properties	Housing	Metal	
	Weight	0.49 kg	
	Dimensions (L x W x H)	20.00 x 8.00 x 2.50 cm	

\* The specifications and pictures are subject to change without notice.