



## Quick Installation Guide



**TEW-424UB**

# Table of Contents

English .....	1
1. Before You Start .....	1
2. How to Install .....	2
3. Wireless Configuration .....	7
Troubleshooting .....	8

# 1. Before You Start



## Package Contents

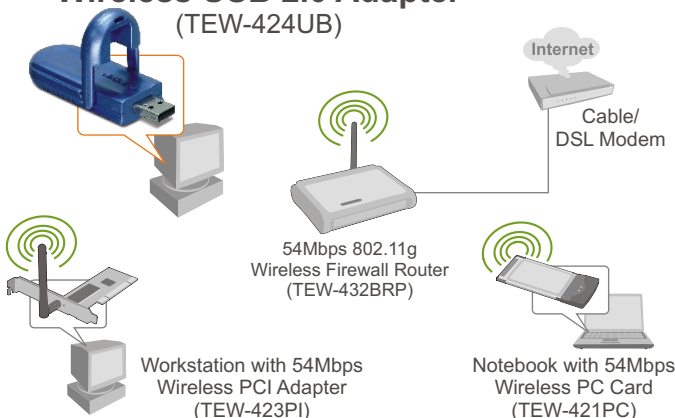
- TEW-424UB
- Quick Installation Guide
- Utility & Driver CD-ROM
- USB Cable

## System Requirements

- USB port: 1.1 or 2.0
- CD-ROM Drive
- CPU: 300MHz or Above/ 800MHz or above (Windows Vista)
- Memory: 256MB RAM or above / 512MB RAM or above (Windows Vista)
- Windows Vista/XP/2000/ME/98SE

## Application

### Workstation with 54Mbps Wireless USB 2.0 Adapter (TEW-424UB)



## 2. How to Install

**Important!** DO NOT install the USB adapter in the computer until instructed to do so.

Note: Refer to the User's Guide on the Driver CD-ROM for Windows 98SE and Windows ME installation instructions

1. Insert the **Utility & Driver CD-ROM** into your computer's CD-ROM Drive and then click **Install Utility**. Then click on your operating system.



2. Follow the **InstallShield Wizard** instructions.

For Windows Vista continue on to step 3. For Windows XP, proceed to step 7. For Windows 2000, proceed to step 14.

### Windows Vista

3. Click **Install this driver software anyway** (Windows Vista only).



4. Click **Finish**.

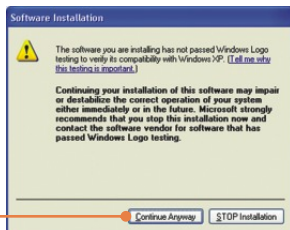
5. Connect the wireless adapter to an available USB port on your computer.



6. Drivers will install automatically.  
Proceed to step 19.

## Windows XP

7. Click **Continue Anyway.**

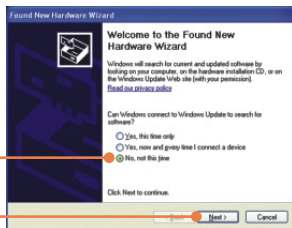


8. Click **Finish.**

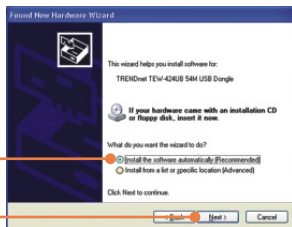
9. Connect the wireless adapter to an available USB port on your computer.



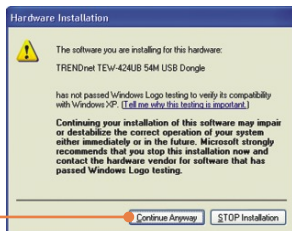
10. Click **No, not this time**. Then click **Next**.



11. Select **Install the software automatically** and then click **Next**.



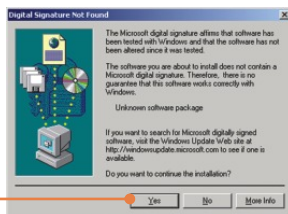
12. Click **Continue Anyway**.



13. Click **Finish**. Then proceed to step 19.

## Windows 2000

14. Click **Yes**.



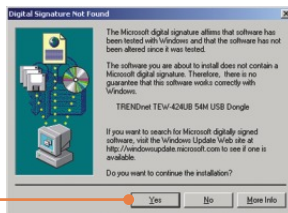
15. Click **Finish**.

16. Connect the wireless adapter to an available USB port on your computer.



17. Drivers will install automatically.

18. Click **Yes**. Then proceed to step 19.



19. Remove the Utility & Driver CD-ROM from your computer's CD-ROM drive.

## **Your installation is now complete.**

For detailed information regarding the TEW-424UB configuration and advanced settings, please refer to the User's Guide included on the Utility & Driver CD-ROM or TRENDnet's website at [www.trendnet.com](http://www.trendnet.com)

### **Register Your Product**

To ensure the highest level of customer service and support, please take a moment to register your product Online at: [www.trendnet.com/register](http://www.trendnet.com/register)

Thank you for choosing TRENDnet



### 3. Wireless Configuration

Note: If you are running Windows XP, you need to disable Wireless Zero Configuration. Please refer to question 4 of the Troubleshooting section.

1. On the bottom right-hand corner of the screen, **double-click** on the **Wireless Adapter Configuration Utility** icon.



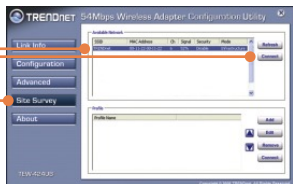
#### Windows Vista

2. Click **Site Survey**. Click the **SSID** that matches your wireless access point and then click **Connect**.



#### Windows XP/2000

3. Click **Site Survey**. Click the **SSID** that matches your wireless access point and then click **Connect**.



**Wireless configuration is now complete.**

For detailed information regarding the TEW-424UB configuration and advanced settings, please refer to the User's Guide included on the Utility & Driver CD-ROM or TRENDnet's website at [www.trendnet.com](http://www.trendnet.com)

**Q1: I inserted the Utility & Driver CD-ROM into my computer's CD-ROM Drive but the installation menu does not appear automatically. What should I do?**

**A1:** If the window does not appear automatically, click **Start**, click **Run**, and type **D:\autorun.exe** where "D" in "D:\autorun.exe" is the letter assigned to your CD-ROM Drive, and then press the ENTER key on your keyboard.

**Q2: I completed all the steps in the quick installation guide, but my Wireless USB Adapter is not connecting to my access point. What should I do?**

**A2:** First, verify that the Network Name (SSID) matches your wireless router or access point's Network Name (SSID). Second, check your TCP/IP properties to ensure that Obtain an IP address automatically is selected. Third, open the Wireless Adapter coconfiguration Utility icon, click the Site Survey link and then click Refresh to check and see if there are any available wireless networks listed. Fourth, your wireless network may be encryption. Contact your network administrator to find the encryption type and encryption key. Then click on **Configuration (Windows Vista)** or **Advanced (Windows XP/2000)** to enter the encryption key.

**Q3: Windows is unable to recognize my hardware. What should I do?**

**A3:** First, make sure your computer meets the minimum requirements as specified in Section 1 of this quick installation guide. Second, you must complete the installation of the wireless configuration utility (as described in Section 2) before connecting the Wireless USB Adapter to your computer. Third, connect the Wireless USB Adapter to a different USB port of your computer.

**Q4: I cannot open the wireless configuration utility. What should I do?**

**A4:** First, access your device manager to make sure the adapter is installed properly. If you see a networking device with a yellow question mark or exclamation point, you will need to reinstall the device and/or the drivers. To access your device manager, right-click **My Computer**, click **Properties**, under the **Hardware** tab click **Device Manager**. Second, if you are running Windows XP, you need to disable wireless zero configuration. Go to **Control Panel > Network Connections**. Right click on the **Wireless Network Connection** icon and select **Properties**. Click on the **Wireless Networks** tab and uncheck **Use windows to configure my wireless settings**. Then click **OK**.

**Q5: How do I install the drivers on Windows 98SE or ME?**

**A5:** Please refer to the User's Guide included on the Driver CD-ROM.

If you still encounter problems or have any questions regarding the TEW-424UB, please refer to the User's Guide included on the Utility & Driver CD-ROM or contact Trendnet's Technical Support Department.

### Certifications

This equipment has been tested and found to comply with FCC and CE Rules.

Operation is subject to the following two conditions:

- (1) This device may not cause harmful interference.
- (2) This device must accept any interference received. Including interference that may cause undesired operation.



Waste electrical and electronic products must not be disposed of with household waste. Please recycle where facilities exist. Check with you Local Authority or Retailer for recycling advice.



**NOTE:** THE MANUFACTURER IS NOT RESPONSIBLE FOR ANY RADIO OR TV INTERFERENCE CAUSED BY UNAUTHORIZED MODIFICATIONS TO THIS EQUIPMENT. SUCH MODIFICATIONS COULD VOID THE USER'S AUTHORITY TO OPERATE THE EQUIPMENT.

### ADVERTENCIA

En todos nuestros equipos se mencionan claramente las características del adaptador de alimentación necesario para su funcionamiento. El uso de un adaptador distinto al mencionado puede producir daños físicos y/o daños al equipo conectado. El adaptador de alimentación debe operar con voltaje y frecuencia de la energía eléctrica domiciliar existente en el país o zona de instalación.



# TRENDnet<sup>®</sup>

## Customer Support

Visit [www.trendnet.com/support](http://www.trendnet.com/support)

### Email:

[support@trendnet.com](mailto:support@trendnet.com)



### Europe (Germany • France • Italy • Spain • Switzerland • UK)

**Toll Free Telephone:** +00800 60 76 76 67

English/Espanol - 24/7

Francais/Deutsch - 11am-8pm, Monday - Friday MET

### Worldwide

**Telephone:** +(31) (0) 20 504 05 35

English/Espanol - 24/7

Francais/Deutsch - 11am-8pm, Monday - Friday MET

## Product Warranty Registration

Please take a moment to register your product online.

Go to TRENDnet's website at <http://www.trendnet.com/register>

# TRENDnet<sup>®</sup>

20675 Manhattan Place  
Torrance, CA 90501  
USA